

SAME Orange County NAVFAC Engineering Competency

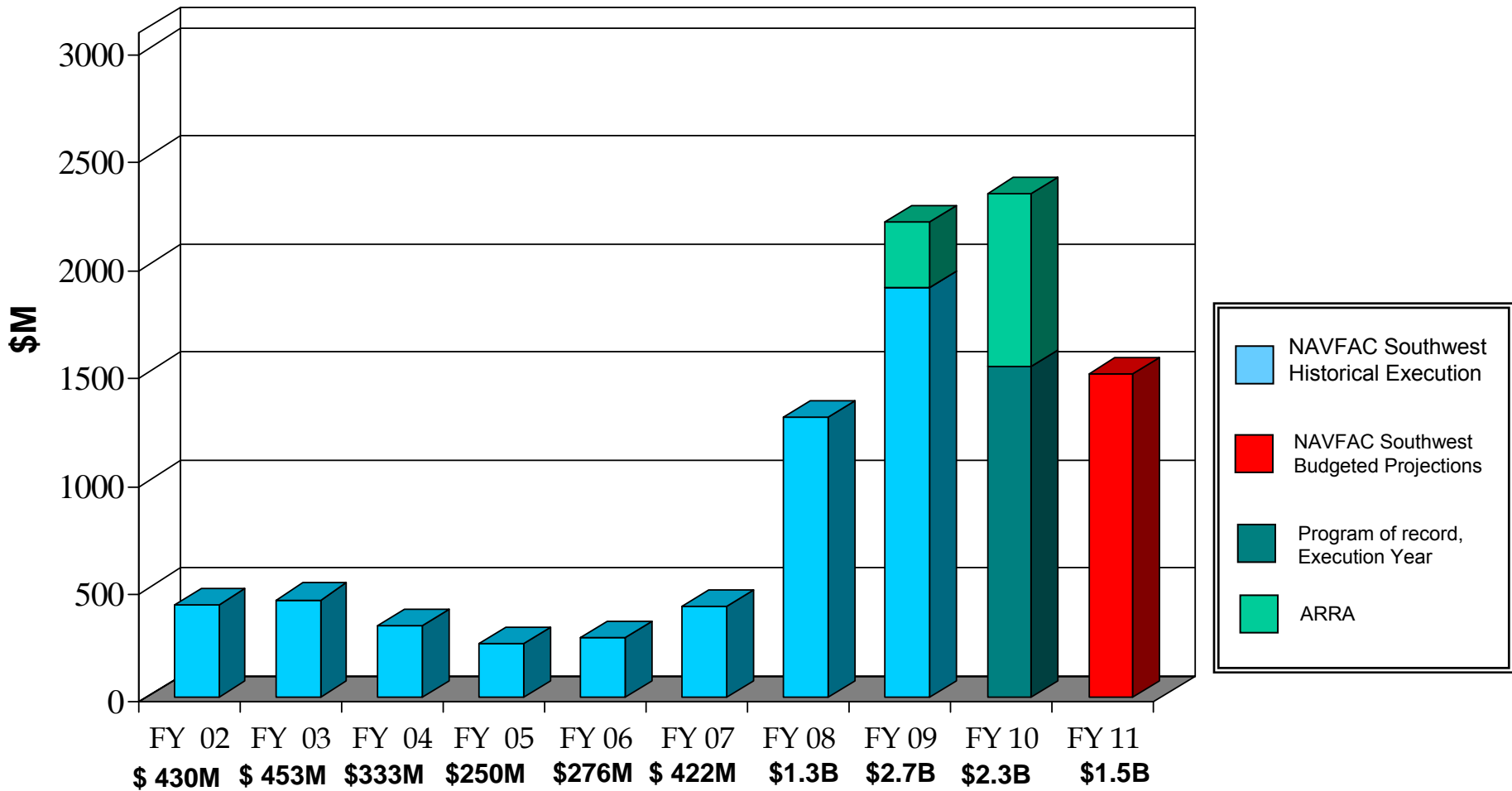
**John Coon, PE
Chief Engineer
Capital Improvements Business Line Coordinator**

19 Nov 2009

Capital Improvements



NAVFAC SW MILCON Program



Engineering Competency



Why does NAVFAC need to develop, grow, and sustain our Design Engineering Competency?

- Required to support NAVFAC's **Vision** – value NAVFAC for delivering mission capability whenever and wherever required.
- Competent engineers in **Responsible Charge** of engineering decisions
- Provide value - **Smart Buyer** of products & services
- **Responsive** to Supported Commands – immediate expert technical consultation
- **Direct** support to the troops (contingency response)
- **Increase Quality** of Products & Services and minimize re-work
- **Retention** of a Strong, Competent, Sustainable Engineering Workforce
- **Improve** Project Cycle Time

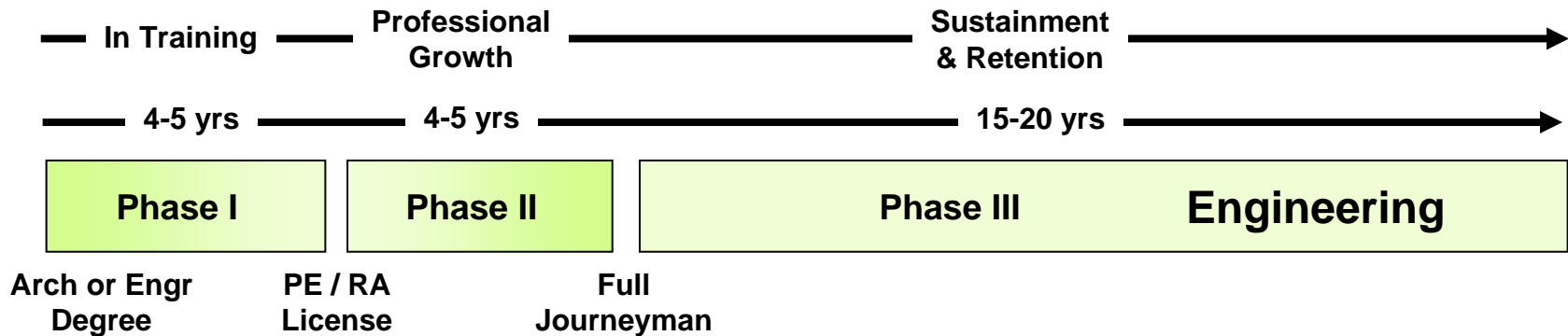
Engineering Competency



Primary Core Engineering Competencies

- Designer / Design Manager
- Project Manager
- Construction Manager

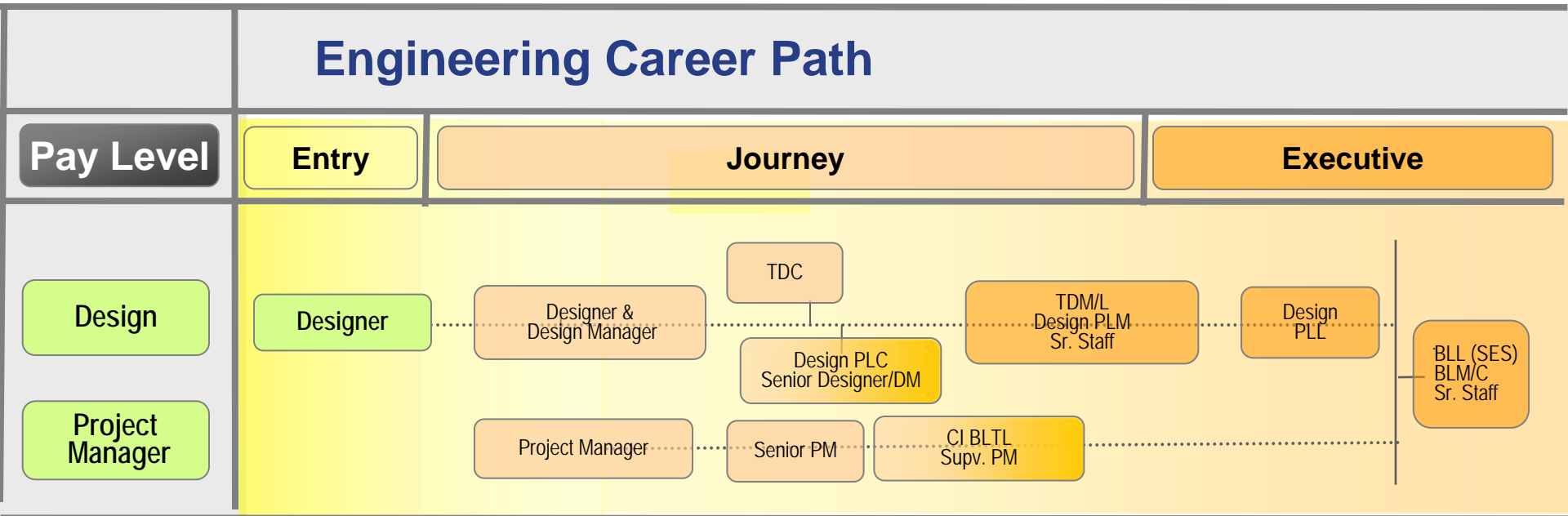
Skills Progression



Design Competency



- Design Competency is the baseline for all engineering
- The method to achieve design competency is IH design



Engineering Competency Sustainment Model



Demographics (% in Total)		IH DBB	IH DB	AE DBB	AE DB	PCAS	Consultation
20	Phase I	50	5	10	20	10	5
20	Phase II	30	15	10	30	5	10
60	Phase III	15	20	5	40	5	15

	IH DBB	IH DB	AE DBB	AE DB	Total
Acq Strategy Type as a % of Total DIP =	14	18	10	58	100

- Focus is on IH DBB and IH DB percentages necessary to develop and maintain competency
- Model is necessary tool in ACQ Planning

Questions?

- *Learn more about NAVFAC ...*



1. Visit our webpage @ www.navfac.navy.mil

2. Go to “Organization” Tab

3. Select desired NAVFAC component

4. Go to “Contact Us/Visitors”

The screenshot shows the NAVFAC website header with the logo and navigation tabs: About Us, Document Library, Business Opportunities, **Organization**, Contact Us, and Seabees. A red arrow points to the 'Organization' tab. A dropdown menu is open under 'Organization', listing various components: NAVFAC Worldwide, Headquarters, NAVFAC Atlantic, NAVFAC Pacific, Specialty Centers, NAVFAC Atlantic, NAVFAC Europe and Southwest Asia, NAVFAC Mid-Atlantic, NAVFAC Midwest, NAVFAC Northwest, NAVFAC Southeast, NAVFAC Southwest, and NAVFAC Washington. On the right side of the page, there is a 'Main Business Lines' section with a list of services including Base Development, Facilities Planning, Project Development, Use Lease, Improvements, (S&E)/(In-House), ed Tech. Service, Engineering, Facility Engineering, Mental, Mental Quality, Mental Restoration, and Works. Below this is a 'Facilities Services' section with items like Facilities Support, Contract Management, Base Support Vehicles & Equipment, Expertise Programs, and Utilities & Energy Mgmt. At the bottom, there is a 'Useful Links' section and a 'View All' button.